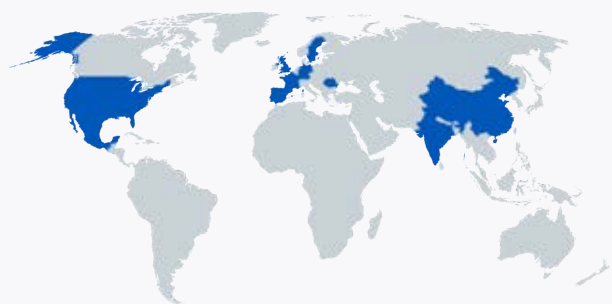




Woodworking

Products and Solutions

**Osborn
worldwide.**



Osborn offers the best solutions for your mechanical surface treatment challenges. Our experts are highly trained to serve you with the best off-the-shelf or customized tools, when and where you need them. Unlike others, we help you optimize your process, meet the highest quality and safety requirements and reduce your costs.

General Information	4
Power Tools	9
Roller Brushes	19
Further information	22
SKU Index	23

Rustic wood look made easy. A simple guide.

Each type of wood has its own structure and grain. To emphasize this, use a wire brush to remove the softer parts of the wood. Then smooth the surface with a sanding brush that matches the fine structure of the wood. Adjust the sanding bristle diameter to the grain to achieve the best results. The intensity of the structuring can be controlled by the duration of processing.



Initial condition

The unprocessed wood

Our aim is to create an appealing, rustic wood look with an interesting feel. Untreated or previously processed wood serves as the basis for this. If you are working with reclaimed wood, make sure you clean it thoroughly and remove all metal parts such as old nails or screws.

Remember to always wear the necessary protective equipment during the following work steps: gloves, safety goggles and a breathing mask if necessary.



Work step 1

Finishing the structure

To emphasize the natural structure of the wood, you will need a wire brush, ideally with brass-coated steel wire. This brush helps to remove the soft early wood and make the grain of the wood visible. Use a brush with fine wires to reach the narrow fibers and achieve a fine, detailed texture. The wires of the brush are flexible and adapt to the course of the wood fibers, making it easier to work out the desired depth and texture.



Work step 2

Smoothing the texture and removing splinters

When working out the deep structure, small wood splinters may occur that do not completely detach from the surface. This makes the wood feel rough and should be sanded down. A brush with abrasive bristles is particularly suitable for this. This brush has fine abrasive particles that help to remove the splinters and even out the “valleys” in the structure. Use a fine grit, such as 120 grit, to ensure that the bristles get into the tight grains of the wood and create a smooth, clean surface.

Frequently Asked Questions when Structuring Wood.



In which direction do I have to guide my brushing tool if I want to texture wood?

The tool must always be guided along the grain direction. For optimum and complete brushing out of the softwood parts, the brush should be guided both forwards and backwards.

What parameters can I work on if I have the feeling that the pattern is not coming out sufficiently?

- Increase the number of repeats (repeat several times)
- A small thread or wire diameter is required, especially for fine structures, which can brush out the narrow early wood parts
- Reduce the feed speed
- If adjustable: Increase the setting/structure depth
- If adjustable: Adjust the number of revolutions

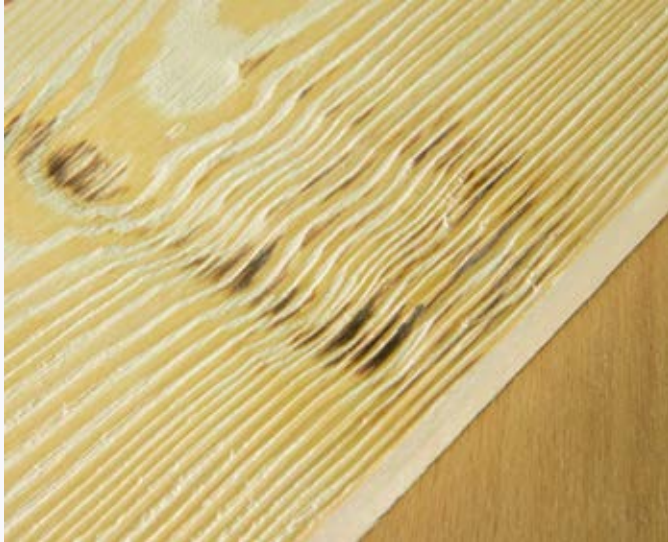
Is the brushed wood surface rough?

No, fibers and smaller wood segments, as with a rough-sawn surface, are removed by brushing. For a particularly smooth finish, we recommend using brushes with abrasive bristles and a fine grit. These are ideal for finishing after structuring with (brass-coated) steel wire to smooth the surface and remove small, protruding wood splinters.

Do I need a power tool for structuring?

Depending on the intended use, the frequency and also the surface to be worked on, it is up to the worker to decide whether they want to work with a powered brushing tool or a hand brush. In principle, a similar result can be achieved with a hand brush as with a drill, for example. The principle of operation is identical, the brush attachment is used to brush out the soft early wood in the direction of the grain to achieve the desired rustic look.

Possible Sources of Error when Structuring Wood.



Burn marks appear in the wood during processing, what can I do about this?

- Avoid long, punctual work to reduce the thermal effects on the wood.
- Contact pressure increases heat development and promotes burn marks and discoloration.
- In general, softwood, especially coniferous wood (e.g. spruce), causes heat to rise more quickly. These types of wood should therefore be processed with particular care when structuring.
 - Why is this the case? Softwoods in particular gasify more quickly. A practical example is the burning of spruce wood in a wood stove.



Dark stains appear after processing, what can I do about this?

- Is the processing material oak, birch, walnut or ash wood? These types of wood contain tannic acid (tannins). These react together with metallic trimmings (wire brush), resulting in brown spots. In the case of wood species with tannic acid content, abrasive fill material should be used due to the discoloration.
- A high residual moisture content of the wood also increases the formation of stains.



Indentations or depressions build up on the surface, what can I do about this?

- Avoid long, punctual work to prevent uneven material removal.
- Pay attention to uniform feed speed and contact pressure.
- Try to achieve the longest possible machining paths to minimize the frequency of tool pick-up and set-down.

Fill Materials.

Types and Usage.

For our tools, we only use filling materials developed in our house or selected specially. Regular quality tests in our R&D labs guarantee highest material quality at all times. You can see in the following table which materials we use for the tools in this catalogue, their properties and benefits, and the workpiece materials on which they are deployed.



Steel wire



Stainless steel wire



Cordwire



Novofil®



Fleece/Sanding Paper

	Structuring		Paint stripping	Sanding	
	Soft wood	Hard wood		Pre-Sanding	Fine-Sanding
Abrasive Filament NHS 46			•		
Abrasive Filament NHS 60	•		•		
Abrasive Filament NHS 80	•		•		
Abrasive Filament NHS 120				•	
Abrasive Filament NHS 240				•	
Steel wire, Ø 0,30		•			
Cordwire, Brass-coated steel, Ø 0,30	•	•			
Coated abrasive flap rollers				•	
Coated abrasive and non-woven combi rollers					•

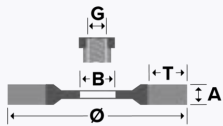


Power Tools

Angle Grinders	10
Power Drills	13
Burnishing Machines	14



Appearance can vary from picture depending on variant.



EUPBWB007 | SUPERIOR ★★★★★

Wheel brushes, stranded, crimped wire

Wheel brush with Cordwire for angle grinders with M14 thread.

- Brass-coated, stranded steel wire
- Effective woodworking, high friction on soft and hardwood
- TÜV-Süd certified (safety tested, production monitored)

Application: Excellently suited to texturing wood. The natural grain of the wood is emphasized and an antique or rustic effect is created. The filaments of the brush reach the softer places of the wood more than the hard ones. So they expose the wood grain and leave a sort of relief surface.

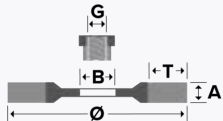


Available in practical POS box packaging with Euro-standard hole for ideal presentation at the POS.

Ø	A	T	G	RPM max.	PKG.		Brass Coated Steel 0.27
115	12	27.5	M14	12500	POS Box	6	● 2812-522 051



Appearance can vary from picture depending on variant.



EUPBWB008 | SUPERIOR ★★★★★

Wheel brushes, abrasive filament

Wheel brush for woodworking, with abrasive trim.

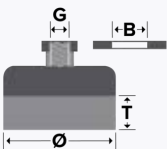
- Suited well to following exactly the material direction for texturing and finishing of wood profiles
- Varying surface patterns possible depending on grit selected
- The low weight of the plastic body ensures it is easy to guide and that work is effortless

Application: Removal of lacquer and pickling, cleaning, texturing, finishing and intermediate lacquer sanding.

Ø	A	T	G	RPM max.		Novofil NN-S 46	Novofil NN-S 60	Novofil NN-S 80
140	55	30	M14	4500	6	● 5421-401 913	● 5411-401 913	● 5401-401 913



Appearance can vary from picture depending on variant.



EUPBCB010 | SUPERIOR ★★☆☆☆

Punched Disc Brush, abrasive filament

Punched disc brush with abrasive trim material for woodworking, for use on angle grinders with adjustable speed.

- For use on large surfaces
- Varying surface pattern possible depending on grit selected
- The low weight of the plastic body ensures it is easy to guide and that work is effortless

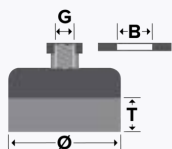
Application: Particularly well suited for removing lacquer and stains, for cleaning, texturing, finishing and intermediate lacquer sanding.

- 9301-614 916** Grit 46 – For creating a depth texture in the wood
- 9311-614 916** Grit 60 – For removing minor to medium levels of dirt, and uniform texturing of the wood
- 9321-614 916** Grit 80 – Preparation before finishing, evens out minor surface irregularities
- 9331-614 916** Grit 120 - Creating the final sanding on the wood surface

A	T	G	RPM max.		Novofil NN-S 46	Novofil NN-S 60	Novofil NN-S 80	Novofil NN-S 120
130	50	M14	2500	4	● 9301-614 916	● 9311-614 916	● 9321-614 916	● 9331-614 916



Appearance can vary from picture depending on variant.



EUPBCB011 | SUPERIOR ★★★★★


Cup brushes, abrasive filament

Cup brush with abrasive Novofil® trim material, industrial quality, for use on angle grinders.

- Long service life
- Low set-up costs / short set-up times
- For effortless and efficient working

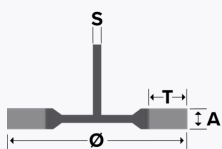
Application: Very well suited to treating vertical surfaces and walls made of assembled flat or round wood elements.

- 7902-613 196** Grit 46 – For creating a depth texture in the wood
- 7922-613 196** Grit 60 – For removing minor to medium levels of dirt, and uniform texturing of the wood
- 7932-613 196** Grit 80 – Preparation before finishing, evens out minor surface irregularities
- 7942-613 196** Grit 120 – Creation of the final finish on the wood surface

Ø	T	G	RPM max.		Novofil NH-S 46	Novofil NH-S 60	Novofil NH-S 80	Novofil NN-S 120
150	25	M14	8500	2	● 7902-613 196	● 7922-613 196	● 7932-613 196	● 7942-613 196



Appearance can vary from picture depending on variant.



EUPBWB012 | SUPERIOR ★★☆☆☆

Wheel brushes, stranded, crimped wire

Wheel brush with Cordwire, industrial quality, for use on power drills.

- Brass-coated, stranded steel wire
- Effective woodworking, high friction on soft and hardwood
- Suitable to working on surfaces due to large working width
- TÜV-Süd certified (design tested, production monitored)

Application: Excellently suited to texturing wood. The natural grain of the wood is emphasized and an antique or rustic effect is created. The filaments of the brush ream the softer places of the wood more than the hard ones. They expose the wood grain and leave a sort of relief surface.

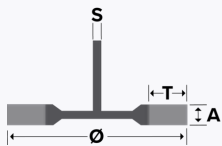


Available on a practical display card with Eurostandard hole for ideal presentation at the POS.

Ø	A	T	S	RPM max.	PKG.		Brass Coated Steel 0.25
80	35	20	8	4000		10	● 0908-507 061
80	35	20	8	4000	POS Card	8	● 7003-507 061



Appearance can vary from picture depending on variant.



EUPBWB043

Wheel brushes, abrasive filament

Wheel brush with abrasive filament, for the use on power drills.

- Special Rustifil trimming style (alternating shorter and longer bristles)
- Ideal for creating a rustic wood texture in softwoods
- Flexible usage due to common Ø 8 mm shank
- Can be used on types of wood that contain tannic acid (e.g. oak, birch or walnut), as abrasive bristles do not react with acid and do not cause staining
- Due to wide face width also usable for processing larger surfaces

Application: Texturing of softwoods and sanding of textured hardwoods

Ø	A	T	S	RPM max.		Silicon Carbide 80
80	35	21	8	4000	10	● 0908-507 911



Appearance can vary from picture depending on variant.



EUPBRB002 | SUPERIOR ★★☆☆☆

Roller brushes for burnishing machines, abrasive / nature filament

Roller brush with abrasive / nature filament in industrial quality, for use on burnishing machines.


- 4 abrasive bristle grits with different filament diameters available (the finer the grit, the smaller the Ø)
- Long trim length makes trimming flexible to reach tight wood grains
- Abrasive bristles are ideal for creating a rustic wood texture into softwood or sanding hardwood after structuring
- Different arbor bores and dimensions available for several machine types


Application: Abrasive bristles: Structuring softwood and sanding hardwood
Fibre: General cleaning and dedusting operations

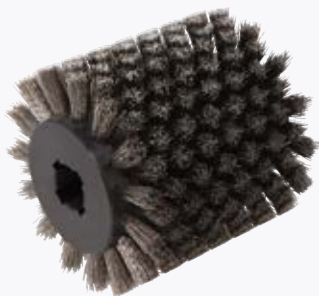
Please note: Bore Ø19 for common burnishing machines like e.g. Metabo, Flex Bore Ø12,7 for Makita brush sanders



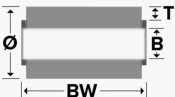
Available in practical POS box packaging with Euro-standard hole for ideal presentation at the POS.

Ø	BW	T	B	RPM max.	PKG.		Silicon Carbide 60	Silicon Carbide 80	Silicon Carbide 120
100	100	20	19.2	5000	POS Box	1	● 6931-401 912	● 6941-401 912	● 6951-401 912
100	120	20	12.7	5000	POS Box	1	● 3931-411 912	● 3941-411 912	● 3901-411 912

Ø	BW	T	B	RPM max.	PKG.		Silicon Carbide 240	Fibre	
100	100	20	19.2	5000	POS Box	1	● 6961-401 912	● 6911-401 942	
100	120	20	12.7	5000	POS Box	1	● 5801-411 912	● 3921-401 942	



Appearance can vary from picture depending on variant.



EUPBRB007 | SUPERIOR ★★☆☆☆

Roller brushes for burnishing machines, crimped wire

Roller brush with crimped wire in industrial quality, for use on burnishing machines.

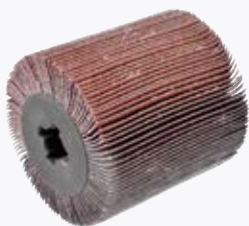
- Different arbor bores and dimensions available for several machine types
- Long trim length makes trimming flexible to reach tight wood grains
- Ideal for creating a rustic wood texture into softwood and hardwood

Application: Structuring softwood and hardwood

Please note: Bore Ø19 for common burnishing machines like e.g. Metabo, Flex Bore Ø12,7 for Makita brush sanders

Available in practical POS box packaging with Euro-standard hole for ideal presentation at the POS.

Ø	BW	T	B	RPM max.	PKG.		Steel 0.30	Stainless Steel 0.20	Brass Coated Steel 0.30
100	100	20	19.2	5000	POS Box	1	● 6901-401 162	● 6921-401 342	● 6921-401 062
100	120	20	12.7	5000	POS Box	1	● 3901-411 162	● 3901-411 342	● 3901-411 062



EUGMFR001 | SUPERIOR ★★★★★

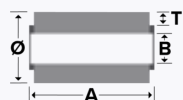
Abrasive flap rollers

Abrasive flap rollers, industrial quality, for use on burnishing machines.

- Coated abrasive with aluminium oxide
- Generates a homogeneous surface pattern

Application: For pre-sanding and texturing.

Appearance can vary from picture depending on variant.



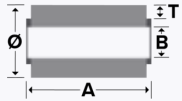
Available in practical POS box packaging with Euro-standard hole for ideal presentation at the POS.

Ø	A	B	RPM max.	PKG.		Aluminium Oxide 40	Aluminium Oxide 60	Aluminium Oxide 80
100	100	19	5000	POS Box	1	● 0043-010 100	● 0063-010 100	● 0083-010 100

Ø	A	B	RPM max.	PKG.		Aluminium Oxide 120	Aluminium Oxide 180	
100	100	19	5000	POS Box	1	● 0123-010 100	● 0183-010 100	



Appearance can vary from picture depending on variant.



EUGMFR002 | SUPERIOR ★★★★★

Coated abrasive and non-woven combi rollers

Abrasive flap rollers with non-woven and abrasive cloth combined, industrial quality, for use on burnishing machines.

- Coated abrasive with aluminium oxide
- Generates a fine surface pattern
- Ideal for removing small scratches

Application: For preparation of a satin finishing process.

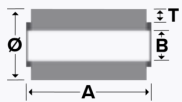


Available in practical POS box packaging with Euro-standard hole for ideal presentation at the POS.

Ø	A	B	RPM max.	PKG.		Aluminium Oxide 60 coarse	Aluminium Oxide 80 medium	Aluminium Oxide 120 fine	Aluminium Oxide 150 very fine	Aluminium Oxide 240
100	100	19	5700	POS Box	1	● 0063-410 100	● 0083-410 100	● 0123-410 100	● 0183-410 100	● 0243-010 100



Appearance can vary from picture depending on variant.



EUGMFR003 | SUPERIOR ★★★★★

Non-woven (satin) finishing rollers

Satin finish rollers with non-woven abrasive material, industrial quality, for use on burnishing machines.

- Generates a satin, matted surface on all materials
- The surface pattern varies depending on the grit (from coarse to very fine)

Application: For creating satin finished surfaces.



Available in practical POS box packaging with Euro-standard hole for ideal presentation at the POS.

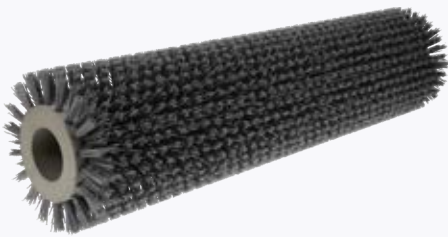
Ø	A	B	RPM max.	PKG.		Aluminium Oxide coarse	Aluminium Oxide fine	Aluminium Oxide very fine
100	100	19	5700	POS Box	1	● 0083-310 100	● 0183-310 100	● 0283-310 100



Roller Brushes

Roller Brushes for Wood Brushing Machines 20

Punched brushes 21



Appearance can vary from picture depending on variant.



EUPBRB006 | SUPERIOR ★★★★★

Roller brushes for wood brushing machines, abrasive filament

Roller brush with abrasive filament, industrial quality, for use on stationary wood brushing machines.

- Uniform trim distribution in dense or light punching density ensures a homogeneous result
- Long service life; therefore reduced tool and unit costs
- Individual brush design for your application purposes and according to your requirement profile

Application: Processing, structuring, finishing, deburring of wood boards in stationary brush machines.



Do you need a customized brushing solution?

We manufacture punched brushes to customer specifications to suit your applications and machines. We can produce almost any face width, brush diameter and adaptation. Get in touch with us.

info@osborn.de or www.osborn.com/qr/punched-roller-brushes-en

Ø	T	BW	B		Silicon Carbide 60	Silicon Carbide 80	Silicon Carbide 120
150	25	600	40	1	● 7261-451 914	● 7281-451 914	● 8611-451 914

Punched Wheel and Roller brushes



The punched wheel/roller brushes are special, versatile and are used in a wide range of industrial applications. In addition to cleaning conveyor belts and metal sheets, they are often used for transporting, wiping, washing, dedusting, oiling, guiding, pressing on, etc. A wide range of applications can also be found in the food sector.

For the use on the corresponding machines and drives, we also offer the corresponding mounting and drive shafts in steel and stainless steel for the stamped roller brushes. We will manufacture them according to your specifications.

Appearance can vary from picture depending on variant.

If you are unsure and would like advice, we are happy to help:
service@osborn.de



Ø Brush			BW Body length	T Trim length
K Body Ø in mm	Min. in mm	Max. in mm	Min. max. in mm	Min. max. in mm
20	25	270	6.5 - 800	14 - 140
40	45	290	6.5 - 800	14 - 140
60	65	310	6.5 - 800	14 - 140
80	85	330	6.5 - 800	14 - 140
100	105	350	6.5 - 800	14 - 140
120	125	370	6.5 - 800	14 - 140
140	145	390	6.5 - 800	14 - 140
160	165	410	6.5 - 800	14 - 140
180	185	430	6.5 - 800	14 - 140
200	205	450	6.5 - 800	14 - 140
220	225	470	6.5 - 800	14 - 140
240	245	490	6.5 - 800	14 - 140
250	255	500	6.5 - 800	14 - 140

Abrasive bristles:

maximum body length 1,500 mm

Wire, non-abrasive bristles:

Maximum body length 800 mm. Can be extended up to 3,000 mm by means of segmentation.

Terms & conditions and contact addresses.

Refer to our website for our general terms of payment and delivery and further information on ordering and dispatch.

Osborn GmbH

Ringstraße 10
35099 Burgwald
Germany
Tel.: +49 (0) 64515880
info@osborn.de

Osborn Unipol Lda

Rua de Pardelhas
4805-062 Brito-Guimarães
Portugal
Tel.: +351 (0) 253479550
osborn-unipol@osborn-unipol.pt

Osborn International AB

Huskvarnavägen 105
56123 Huskvarna
Sweden
Tel.: +46 (0) 36389200
info@osborn.se

Osborn Unipol SAS

24B avenue de la Demi-Lune
CS 80006
95735 Roissy CDG cedex
France
Tel.: +33 (0) 134450600
contact@osborn-unipol.fr

Osborn GmbH

Premium Polishing Compounds
Rudolf-Harbig-Weg 10
42781 Haan
Germany
Tel.: +49 (0) 212993070
polishing@osborn.de

Osborn International

R2001, Unit 2, Building No. 3
Yard No. 11, Shuangying Road
Chaoyang, 100012 Beijing
China
Tel.: +86 1084986167
cnsales@osborn.com

Osborn Lippert (India) Pvt Ltd

Plot nos E 65 & 66, MIDC Waluj
Aurangabad - 431 136
India
Tel.: +91 2402556538
sales@osborn-lippert.co.in

Osborn Mexico

Emilio Cárdenas No. 211
Centro Industrial Tlalnepantla
Tlalnepantla Edo, México, 54030
Mexico
Tel.: +52 55556559555

Osborn Unipol (UK) Limited

Newhouse Farm Industrial Estate
Chepstow NP16 6UD
United Kingdom
Tel.: +44 1291643200
sales@osborn.co.uk

Osborn International SRL

Bd. Bucovina, Nr. 151
725300 Gura Humorului,
jud. Suceava
Romania
Tel.: +40 (0) 230234212
sales@osborn.ro

Osborn - Unipol, S.L.

C/ Ronda Norte, 320
(Polígono Industrial) - Apartado 169
46470 Catarroja (Valencia)
Spain
Tel.: +34 (0) 961325876
ventas@osborn.es

Osborn LLC- Richmond, IN - USA

2350 Salisbury Road North
47374 Richmond
United States
Tel.: +1 800 7203358
marketsupport@osborn.com

Osborn Singapore Pte Ltd

206 Tuas South Avenue 2,
West Point
Bizhub
637208 Singapore
Singapore
Tel.: +65 68630318
sales@osborn.com.sg

Osborn LLC - Hamilton, OH - USA

Premium Polishing Compounds
3440 Symmes Road
Hamilton, OH 45015
United States
Tel.: +1 800 5378449
polishing@osborn.com

0		0908507061	13	5411401913	10	7261451914	20
0043010100	16	0908507911	13	5421401913	10	7281451914	20
0063010100	16	2		5801411912	14	7902613196	12
0063410100	17	2812522051	10	6		7922613196	12
0083010100	16	3		6901401162	15	7932613196	12
0083310100	17	3901411062	15	6911401942	14	7942613196	12
0083410100	17	3901411162	15	6921401062	15	8	
0123010100	16	3901411342	15	6921401342	15	8611451914	20
0123410100	17	3901411912	14	6931401912	14	9	
0183010100	16	3921401942	14	6941401912	14	9301614916	11
0183310100	17	3931411912	14	6951401912	14	9311614916	11
0183410100	17	3941411912	14	6961401912	14	9321614916	11
0243010100	17	5		7		9331614916	11
0283310100	17	5401401913	10	7003507061	13		

Finish. First.

The Global Leader in Surface Treatment Solutions and
Finishing Tools

Osborn GmbH
Ringstraße 10
35099 Burgwald
Germany

Phone: +49 (0)6451 588-0

Fax: +49 (0)6451 588-206

info@osborn.de

www.osborn.com

General

The tools shown in this catalogue, and the information on delivery scopes, appearances, performances and dimensions, correspond to information available at the time of print. We are enhancing our products continually. We reserve the right to make changes to products and prices.

In the event prices are printed in the catalogue, all previous price lists are rendered void on publication of this catalogue. All prices are recommended retail prices in Euro per piece. VAT, packaging, transport/postal charges and insurance are extra. Our general terms and conditions apply for all orders.

Print date: 2024-11-04



[osborn.com](https://www.osborn.com)