



TUNGSTEN CARBIDE BURRS

TUNGSTEN CARBIDE BURRS



TUNGSTEN CARBIDE BURRS, Z6 CUT

SUPERIOR ★★★★★

Tungsten carbide burrs with Z6 cut offer high material removal and are suitable for universal use on the most important industrial materials.

For processing of: stainless steel, steel, non-ferrous metal, cast iron

Recommended application speed (RPM)

 Ø Head (KD)	soft material		hard material	
	<ul style="list-style-type: none"> ■ unalloyed steel ■ cast steel ■ cast iron 		<ul style="list-style-type: none"> ■ alloy steel ■ tool steel ■ rust and acid resistant steel 	
	cutting speed (m/min)		cutting speed (m/min)	
	min. 450 max. 600		min. 250 max. 350	
	RPM		RPM	
3	48,000	64,000	27,000	37,000
6	24,000	32,000	13,000	19,000
8	18,000	24,000	10,000	14,000
9.5	15,000	20,000	8,000	12,000
10	14,000	19,000	8,000	11,000
12	12,000	16,000	7,000	9,000
12.7	11,000	15,000	6,000	9,000
16	9,000	12,000	5,000	7,000



TUNGSTEN CARBIDE BURRS



Z6

SHIPYARD

More Power?

With our special cut **Shipyards**, you get a 30 % increase in stock removal thanks to the optimised cutting angle. Available on all head shapes.

Please contact us:

Phone: +49 6451 588-0

30%
MORE STOCK
REMOVAL



Tailor-made solutions

You need a different cut, shaft length or different dimensions?
We will be pleased to work out a tailor-made solution for your machining process.

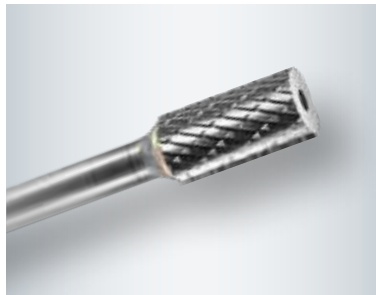
Please contact us:

Phone: +49 6451 588-0



TUNGSTEN CARBIDE BURRS

CYLINDRICAL SHAPE (ZYA)



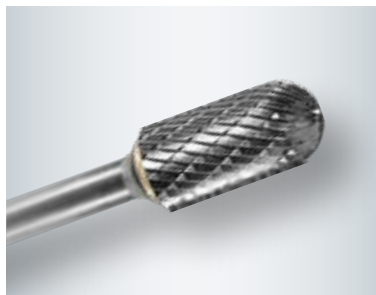
KD	KL	SD	GL	Cut	PU	RPM	Order no.
06	16	06	50	Z6	1	25,000 - 40,000	0013-080 050
08	20	06	65	Z6	1	20,000 - 30,000	0003-080 065
10	20	06	65	Z6	1	15,000 - 25,000	0013-080 065
12,7	25	06	70	Z6	1	12,000 - 18,000	0063-080 070
03	13	03	40	Z6	1	45,000 - 70,000	0013-080040
06	13	03	43	Z6	1	25,000 - 40,000	0003-080043

CYLINDRICAL SHAPE, END CUTS (ZYA-S)



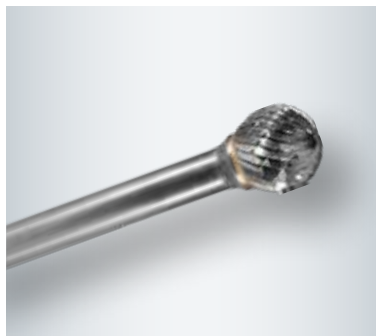
KD	KL	SD	GL	Cut	PU	RPM	Order no.
06	16	06	50	Z6	1	25,000 - 40,000	0023-080 050
08	20	06	65	Z6	1	20,000 - 30,000	0023-080 065
10	20	06	65	Z6	1	15,000 - 25,000	0033-080 065
12,7	25	06	70	Z6	1	12,000 - 18,000	0003-080 070
03	13	03	40	Z6	1	45,000 - 70,000	0023-080 040
06	13	03	43	Z6	1	25,000 - 40,000	0013-080 043

ROUND CYLINDRICAL SHAPE (WRC)



KD	KL	SD	GL	Cut	PU	RPM	Order no.
06	16	06	50	Z6	1	25,000 - 40,000	0033-080 050
08	20	06	65	Z6	1	20,000 - 30,000	0043-080 065
10	20	06	65	Z6	1	15,000 - 25,000	0053-080 065
12,7	25	06	70	Z6	1	12,000 - 18,000	0013-080 070
03	13	03	40	Z6	1	45,000 - 70,000	0033-080 040
06	13	03	43	Z6	1	25,000 - 40,000	0023-080 043

SPHERICAL SHAPE (KUD)



KD	KL	SD	GL	Cut	PU	RPM	Order no.
06	05	06	50	Z6	1	25,000 - 40,000	0043-080 050
08	6,5	06	51	Z6	1	20,000 - 30,000	0003-080 051
10	09	06	54	Z6	1	15,000 - 25,000	0003-080 054
12	11	06	54	Z6	1	12,000 - 18,000	0013-080 054
16	14	06	59	Z6	1	9,000 - 13,000	0003-080 059
03	2,8	03	40	Z6	1	45,000 - 70,000	0043-080 040
06	05	03	39	Z6	1	25,000 - 40,000	0003-080 039

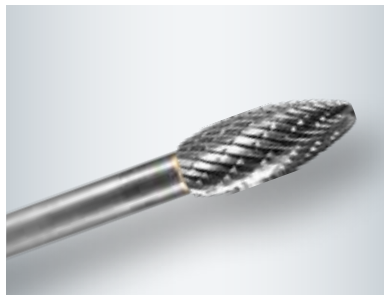
TUNGSTEN CARBIDE BURRS

OVAL SHAPE (TRE)



KD	KL	SD	GL	Cut	PU	RPM	Order no.
06	16	06	50	Z6	1	25,000 - 40,000	0053-080 50
08	13	06	58	Z6	1	20,000 - 30,000	0003-080 058
9,5	16	06	61	Z6	1	15,000 - 28,000	0003-080 061
12,7	22	06	67	Z6	1	12,000 - 18,000	0003-080 067
03	07	03	40	Z6	1	45,000 - 70,000	0053-080 040
06	10	03	40	Z6	1	25,000 - 40,000	0063-080 040

FLAME SHAPE (FLF)



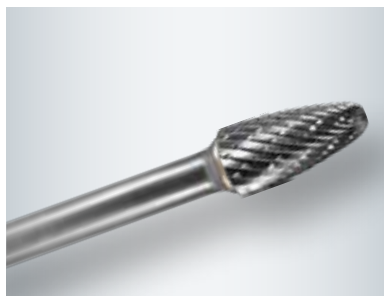
KD	KL	SD	GL	Cut	PU	RPM	Order no.
06	18	06	50	Z6	1	25,000 - 40,000	0063-080 050
08	20	06	65	Z6	1	20,000 - 30,000	0063-080 065
10	25	06	70	Z6	1	15,000 - 25,000	0023-080 070
12,7	32	06	77	Z6	1	12,000 - 18,000	0003-080 077
03	08	03	40	Z6	1	45,000 - 70,000	0073-080 040
06	13	03	43	Z6	1	25,000 - 40,000	0033-080 043

TREE SHAPE (SPG)



KD	KL	SD	GL	Cut	PU	RPM	Order no.
06	16	06	50	Z6	1	25,000 - 40,000	0083-080 050
08	18	06	63	Z6	1	20,000 - 30,000	0003-080 063
10	20	06	65	Z6	1	15,000 - 25,000	0093-080 065
12,7	25	06	70	Z6	1	12,000 - 18,000	0043-080 070
03	13	03	40	Z6	1	45,000 - 70,000	0093-080 040
06	13	03	43	Z6	1	25,000 - 40,000	0053-080 043

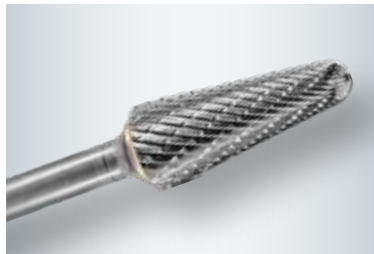
ROUND TREE SHAPE (RBF)



KD	KL	SD	GL	Cut	PU	RPM	Order no.
06	16	06	50	Z6	1	25,000 - 40,000	0073-080 050
08	20	06	65	Z6	1	20,000 - 30,000	0073-080 065
10	20	06	65	Z6	1	15,000 - 25,000	0083-080 065
12,7	25	06	70	Z6	1	12,000 - 18,000	0033-080 070
03	13	03	40	Z6	1	45,000 - 70,000	0083-080 040
06	13	03	43	Z6	1	25,000 - 40,000	0043-080 043

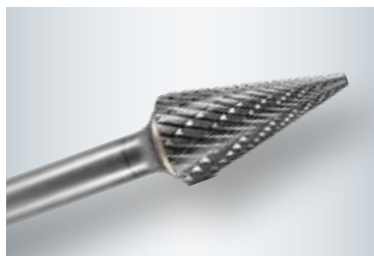
TUNGSTEN CARBIDE BURRS

ROUND CONICAL SHAPE (KEL)



KD	KL	SD	GL	Cut	PU	RPM	Order no.
06	16	06	50	Z6	1	25,000 - 40,000	0103-080 050
08	20	06	65	Z6	1	20,000 - 30,000	0113-080 065
10	30	06	75	Z6	1	15,000 - 25,000	0003-080 075
12,7	32	06	77	Z6	1	12,000 - 18,000	0013-080 077
03	13	03	40	Z6	1	45,000 - 70,000	0113-080 040

CONICAL SHAPE (SKM)



KD	KL	SD	GL	Cut	PU	RPM	Order no.
06	16	06	50	Z6	1	25,000 - 40,000	0093-080 050
10	20	06	65	Z6	1	15,000 - 25,000	0103-080 065
12,7	25	06	70	Z6	1	12,000 - 18,000	0053-080 070
03	13	03	40	Z6	1	45,000 - 70,000	0103-080 040
06	13	03	43	Z6	1	25,000 - 40,000	0063-080 043

TIP SHAPE, ANGLE 60° (KSJ)



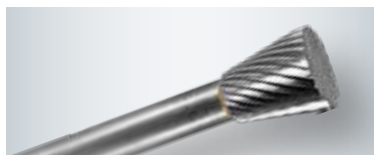
KD	KL	SD	GL	Cut	PU	RPM	Order no.
10	13	06	58	Z6	1	15,000 - 25,000	0013-080 058

TIP SHAPE, ANGLE 90° (KSK)



KD	KL	SD	GL	Cut	PU	RPM	Order no.
10	08	06	55	Z6	1	15,000 - 25,000	0003-080 055

CUP SHAPE (WKN)



KD	KL	SD	GL	Cut	PU	RPM	Order no.
10	13	06	58	Z6	1	15,000 - 25,000	0023-080 058



RECOMMENDATIONS

Problem	Solution
Tool impact/rattle	<ul style="list-style-type: none"> ■ Increase clamping length (min. 2/3 of shank length) ■ Reduce contact pressure ■ Reduce surface contact (max. 1/3 of head circumference) ■ Clamp workpiece with less projection
Discolouration of the tool in the transition from milling head to shank	<ul style="list-style-type: none"> ■ Reduce speed (see RPM) ■ Reduce contact pressure ■ Reduce surface contact (max. 1/3 of head circumference)
Head detaches from the shank	
Problems with broken teeth and premature wear	<ul style="list-style-type: none"> ■ Avoid impact loads ■ Increase clamping length (min. 2/3 of shank length) ■ Reduce contact pressure ■ Reduce surface contact (max. 1/3 of head circumference) ■ Clamp workpiece with less projection

WE SELL SOLUTIONS

The Global Leader in Surface Treatment Solutions
and Finishing Tools

Osborn GmbH
Ringstraße 10
35099 Burgwald
Germany

phone: +49 (64 51) 5 88-0
fax: +49 (64 51) 5 88-206

info@osborn.de
www.osborn.de

General

The tools shown in this catalogue, and the information on delivery scopes, appearances, performances and dimensions, correspond to information available at the time of print. We are enhancing our products continually. We reserve the right to make changes to products and prices.

In the event prices are printed in the catalogue, all previous price lists are rendered void on publication of this catalogue. All prices are recommended retail prices in Euro per piece. VAT, packaging, transport/postal charges and insurance are extra. Our general terms and conditions apply for all orders.